

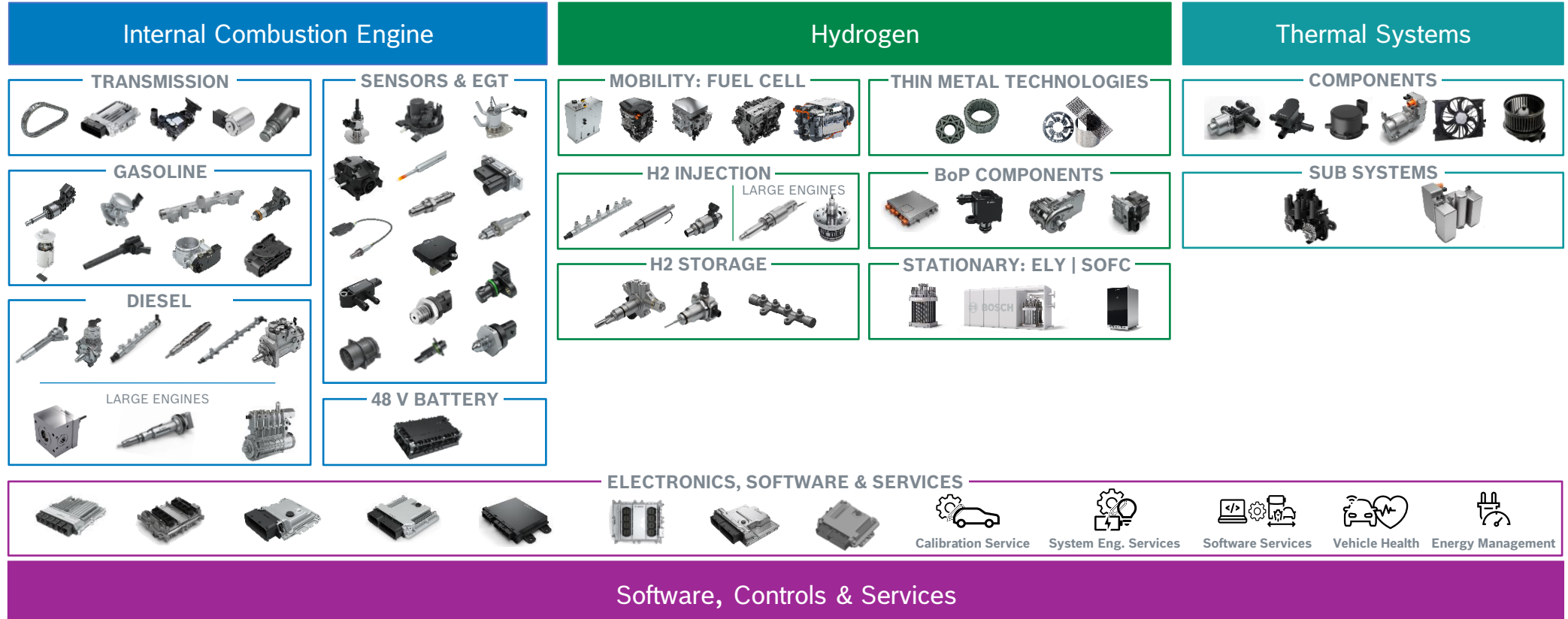


AI Readiness Driven in a Collaborative Network

Samuel Wagner, 21.02.2025

Power Solutions – Exemplary Product Portfolio

70.000 People working on...



BoP: Balance of Plants | EGT: Exhaust Gas Aftertreatment | ELY: Electrolyzer | SOFC: Solid Oxide Fuel Cell



> 70.000
Bosch PS associates







AI Readiness







Senior
Data Scientist

Junior
Data Scientist

Digital Native

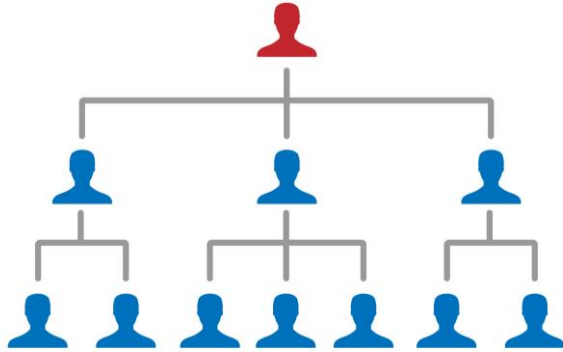
Digital Outsider



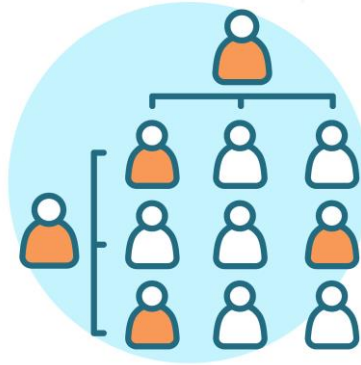
AI Readiness



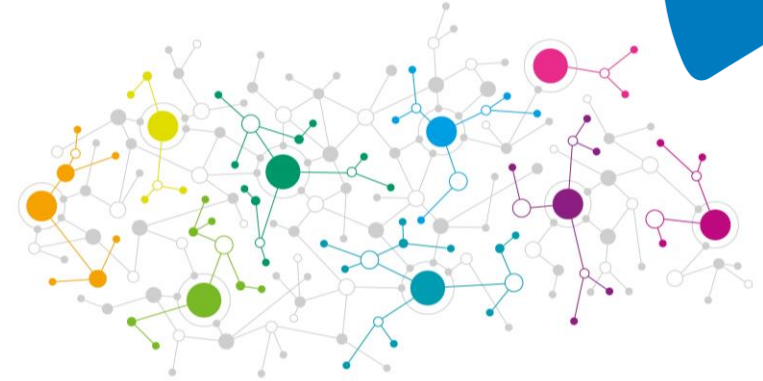
Orga structure blueprints



- ⊕ Defined roles and responsibilities
- ⊕ Clear communication paths
- ⊕ Intensive collaboration in departments
- ⊖ Department first
- ⊖ Communication about cross-department topics takes a long time
- ⊖ Collaboration needs to be approved by many managers



- ⊕ Managers can identify the right person for a specific project
- ⊕ People work topic- and functional-wise
- ⊖ Complex decision-making since individuals have multiple reporting lines
- ⊖ Resource allocation needs to be balanced between two parties



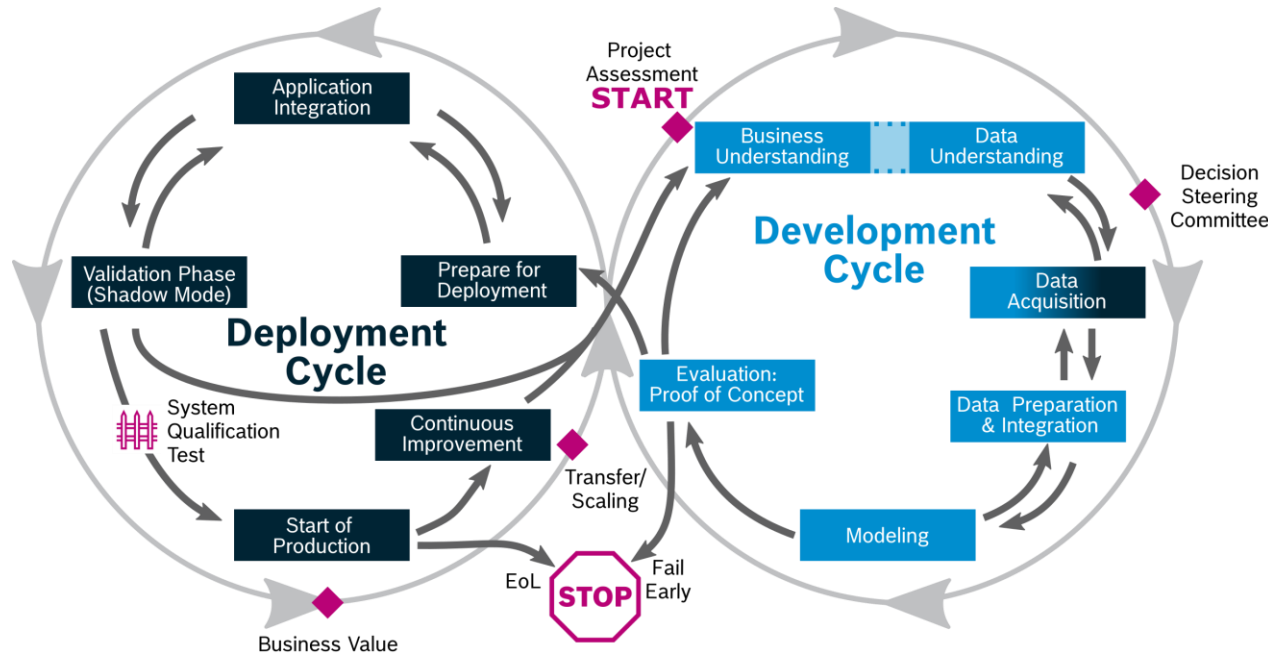
- ⊕ Flexible and agile collaboration between different functions and locations
- ⊕ Shared responsibility: distributed to the best experts in multiple organizations
- ⊕ More flexible and adoptable to changes
- ⊖ Complex to know who is responsible for what
- ⊖ Resource allocation needs to be balanced between many parties
- ⊖ Higher autonomy can lead to challenges in keeping the same targets

AI Readiness





Guiding Principles for AI Quality



From Business Understanding to GoLive and beyond

Needs regarding the algorithm

Needs regarding the data

Needs regarding the project setup

Roles and Responsibilities

Risk Analysis Guidelines

AI Readiness





1 aligned vision

12 Core Members of AI Network

58 AI Coordinators

140 regular participants in expert exchanges

400 people trained

10 conducted AI Innovation Processes

400 running AI-projects

1 method to release AI

AI has become a natural part of our daily business

For vision-related, cross-function collaboration in Digitalization

